

Automatic CNC Busbar Bending Punching Shearing Machine With Plc Control System

Specifications :

Price	Contact us
Brand Name	KIANDE
Model Number	KD-DTJGJ-C/A-4.5(6)
Place of Origin	China
Min.Order Quantity	1
Payment Terms	T/T,L/C,D/P
Supply Ability	100
Delivery Detail	20days--35days
Packaging Details	Wooden case or wooden pellets depended on clients' require
Force (KN) Bend	400
Force (KN) Punch	300
Force (KN) Piler Head	300
Min. Conductor Length	1200mm
Stroke of X Axis	4m
Speed of X Axis	0~10m/min
Marking	Pneumatic, Barcode, QR code (Optional)
Conductor Size (Aluminum, Copper)Length	1000mm~6000mm
Conductor Size (Aluminum, Copper)Width	300mm~140mm
Conductor Size (Aluminum, Copper)Thickness	2mm~4.5mm
Positioning Accuracy	0.2mm
Repetitive Positioning Accuracy	0.05mm
Max. Cutting Width	280mm
Power of Saw Blade	2kW
Diameter of Saw Blade	400mm

Max. Bending Width	300mm
Max. Bending Height Difference	40mm
Max. Hydraulic Force	31.5Mpa
Total Power	6kW

Detail Introduction :

CNC Punching and Bending machine

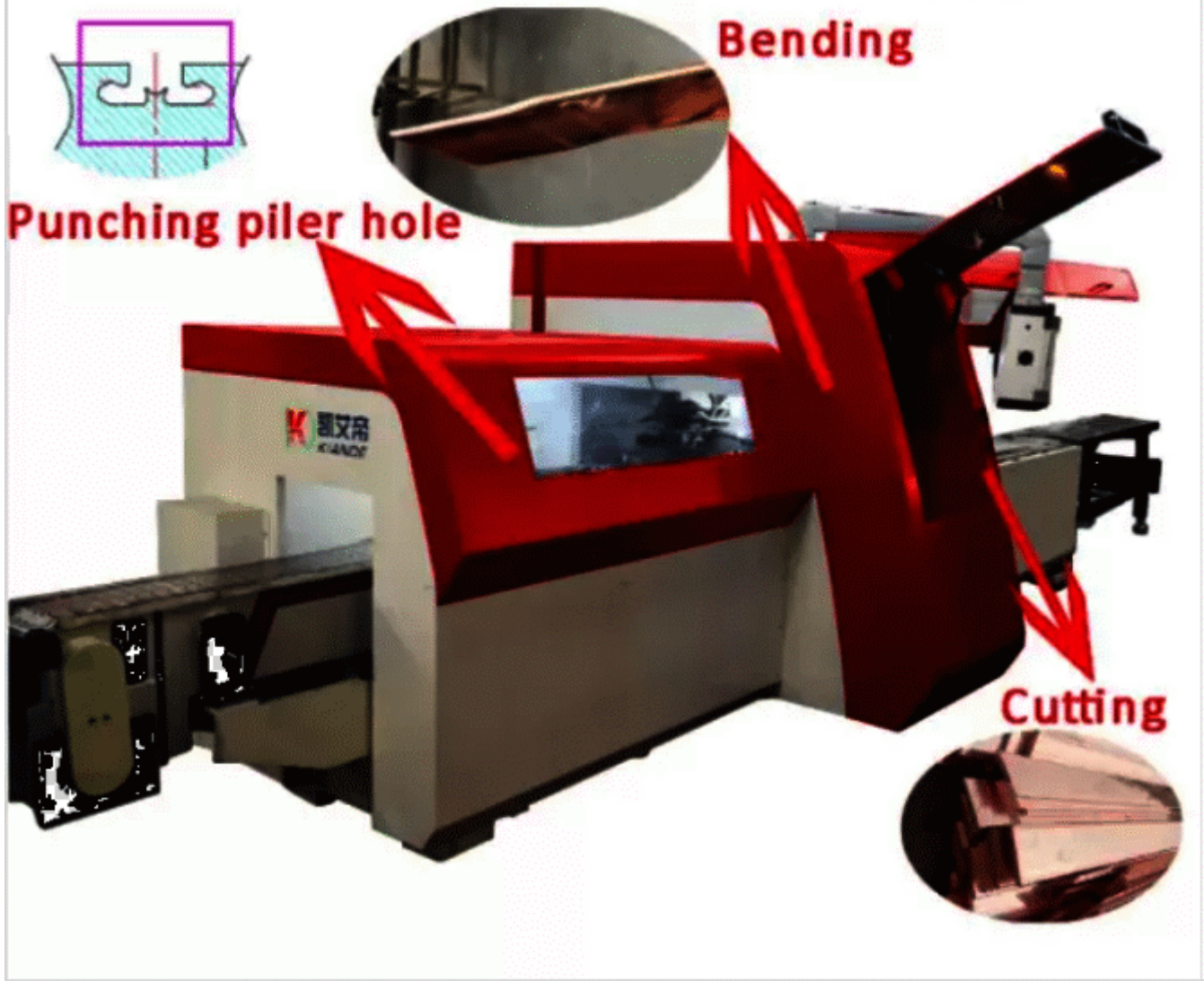
Cnc Busbar Bending Punching Shearing Machine can realize automatic bending of two ends, as well as automatic opening mouth and pressing of piler through inputting required length, width and piler position in the PLC control system. This machine is also a type of busbar machine.

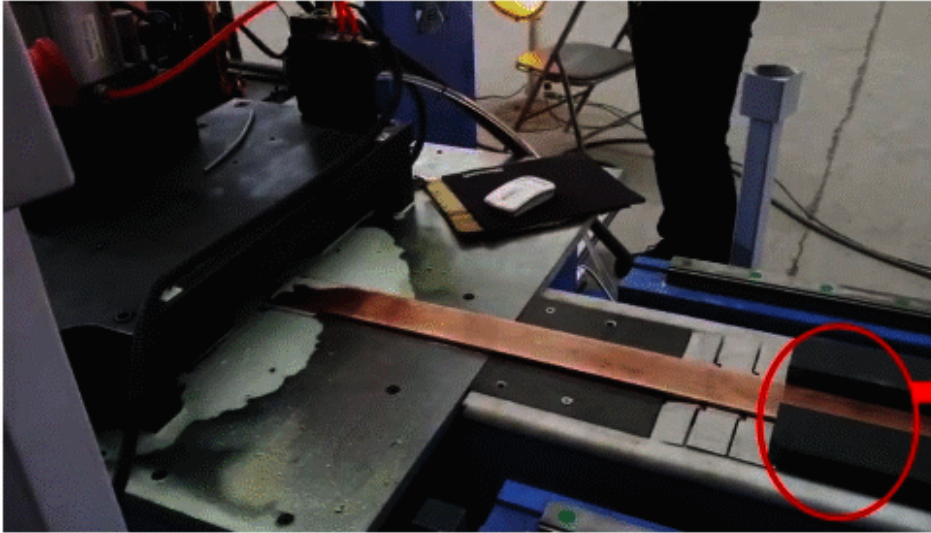
Advantages:

It can process the bus bar longer than 1meter completely automatically. The working efficiency is very high, around 1 minute per piece.

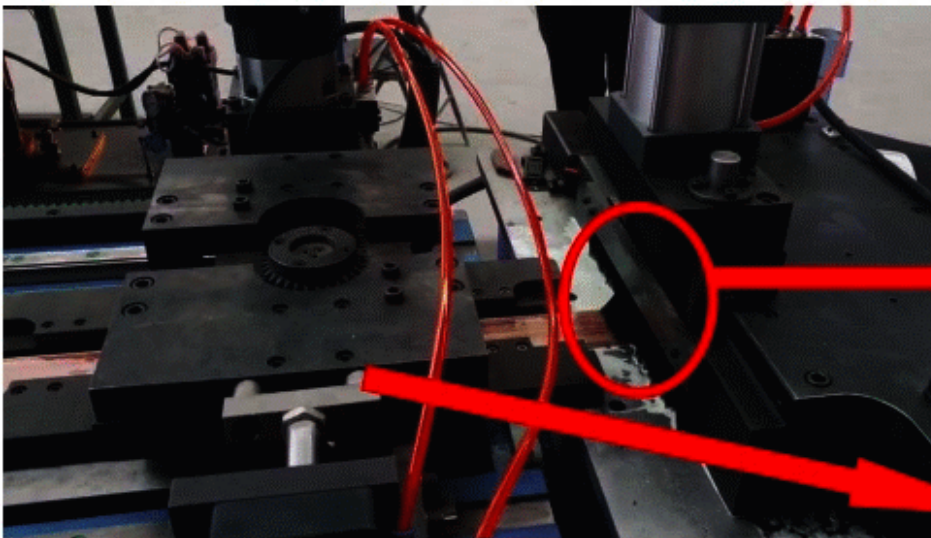
Disadvantages:

The very short bus bar cannot be processed on this machine



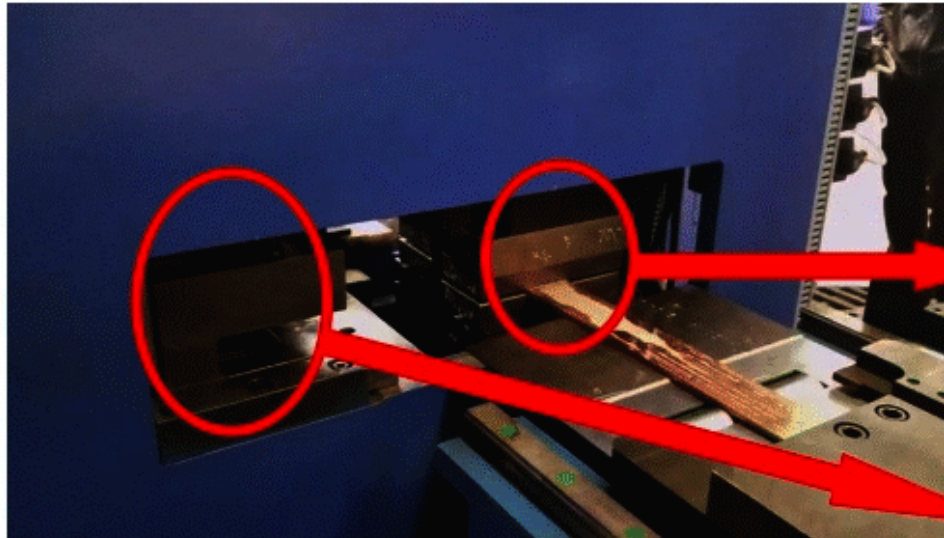


The operator inputs the data on touch screen and loads the raw materials(long bus bar) on the worktable. The clamping fixture will come automatically to grab the bus bar to the origin pint for cutting.



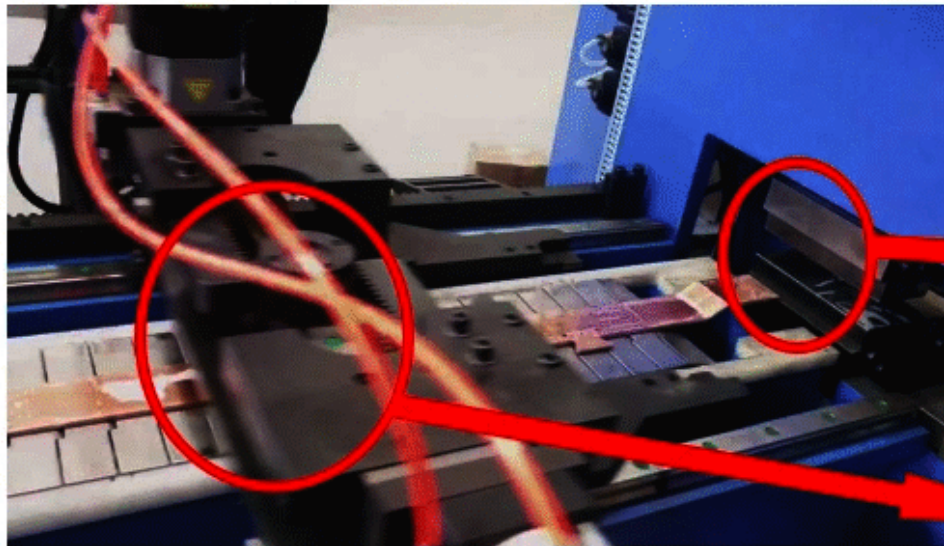
The cutting die will cut automatically.

After cutting, the clamping fixture will grab the cut bus bar with required length automatically and transfer to the bending point.



The bending die will bend automatically at one end of the bus bar.

The punching die will punch holes automatically.



The bending die will bend automatically at the other end of the bus bar.

The clamping fixture will transfer the finished bus bar automatically to discharge.

The machine can complete various processing techniques of punching holes(round holes, long round holes etc), embossing, cutting, slotting, cutting round corners etc.

The machine can automatically process copper with 3mm thickness and 15mm width.

The hydraulic main and assistant double clamp and the clamp can automatically change. That can provide the machining precision and work efficiency.

Automatic dragging(push material) system can push off the finished workpieces.

Large die library, cutting surface is smooth without indentation. Die material is high performance alloy steel mold, quenching process is advanced, the processing level is high and long service life.